

discover

Boone County Public Library



Historic Boone County Murals Discovered and Restored

A significant discovery was made in the basement of the old Walton Branch, where historic murals were recently found. Our Archive and History Center successfully identified the artist behind the murals as Caroline Williams.

Williams created these sketches in the 1960s, and possibly into the 1970s, with pen and ink as her primary medium. Ginny Kohl and Ted Bushelman, leaders of the BCPL Board in the 1970s, visited Williams to discuss the creation of large-scale prints for the new Florence Branch. Williams selected images from her collection that represented key Boone County landmarks.

To plan for restoration of the discovered murals, the library consulted with The Art Company in Cincinnati. Experts proposed photographing and reprinting them on stretched canvas to preserve the images and prevent further deterioration. Photographer Claudia Hershner arranged for the murals to be photographed, capturing the details of the aging artwork, and restored the images to their former glory.

In celebration of BCPL's 50th Anniversary, these beautiful images are once again displayed in the Florence Branch.



C. Williams

For more information and photographs, visit bcplundiscovered.org. For in-person viewing of the artwork, visit the Florence Branch.



BCPL
Boone County Public Library

REGISTER FOR LIBRARY EVENTS

Go to bcpl.org and locate your program in the Library's event calendar or call 859-342-BOOK (2665) and select the appropriate location. All registrations will close one hour prior to the event unless otherwise noted.

Holly Jolly Fun!

Holiday Line Dancing

Wednesday, December 4
Scheben Branch
6:30 p.m.

Recycle Your Holiday String Lights

December 1 – February 1

All locations

Keep your holiday string lights out of the landfill. Bring them to any BCPL location for recycling. Be sure to remove all boxes and bags.

Yoga for Healthy Weight

Mondays

Main Library, 6 p.m.

Wednesdays (No class December 25)

Hebron Branch, 6 p.m.

Thursdays

Scheben Branch, 6 p.m.

Bring a yoga mat. \$30 monthly. Register at boonecountyky.org/departments/parks or call 859-334-2117.

Easy English Group

Wednesdays (No class December 25)

Florence Branch, noon

Improve your English reading and speaking skills in a low-stress setting. All levels welcome.

Take and Make: Santa Rock

Monday, December 2

Main Library

Pick up a kit to paint a seasonal stone decoration, while supplies last.

Take and Make: Mug Cozy

Monday, December 2

Walton Branch

Pick up a kit to sew your own wrap for a warm winter drink, while supplies last.

Kawaii-brary!

Monday, December 2

Florence Branch, 6 p.m.

Create an adorable winter-themed tote bag to gift to yourself or someone else. Please register.

Medicare 101

Monday, December 2

Main Library, 6:30 p.m.

Discuss the ins and outs of Medicare and new updates for 2025.

Hoxworth Blood Drive

Tuesday, December 3

Main Library, noon-6 p.m.

Visit hoxworth.org/groups/bcpl or call 513-451-0910 for an appointment.



Self-Defense for Beginners

Tuesday, December 3

Hebron Branch, 6 p.m.

Learn basic strategies and maneuvers for self-defense with Master Greg from Shaolin-Do. Please register.

Take and Make: Holiday Gift Bag

Wednesday, December 4

Scheben Branch

Pick up a kit to design a special gift bag to share, while supplies last.

Holiday Line Dancing

Wednesday, December 4

Scheben Branch, 6:30 p.m.

Dance into the Christmas spirit with beginner line dances set to holiday tunes. Santa hats and sweaters are encouraged! Please register.



Chocolate Truffle Making

Thursday, December 5

Florence Branch, 6 p.m.

Learn the tips and tricks of truffle making. Roll, dip and decorate a peanut butter truffle to sample and take home two recipes. Please register.

SWET DanceFit

Saturday, December 7

Hebron Branch, 9:30 a.m.

Try a nonstop, medium to high energy cardio dance class that combines various dance styles. Please register.

Victorian Christmas Crafts

Saturday, December 7

Florence Branch, 11 a.m.

Immerse yourself in the timeless charm of Victorian-era holiday traditions by creating period-style crafts. Please register.

Take and Make: Melted Snowman

Monday, December 9

Walton Branch

Pick up a kit to make a handmade decoration that will melt hearts, while supplies last.

Puppies for Presents

Monday, December 9

Scheben Branch, 6:30 p.m.

Make a SMART choice for your family. Learn what to consider when choosing, adopting or purchasing a puppy. The SMART Dog School will help you prepare your home and set the groundwork for a happy and well-behaved companion.

Writers Group

Tuesday, December 10

Main Library, 7 p.m.

Open to all genres of writing. Share your work with others for feedback, encouragement and inspiration. Email asn@bcpl.org with questions.

Intro to Google Sheets

Wednesday, December 11

Main Library, 6:30 p.m.

Learn how to create and collaborate on spreadsheets with an introduction to this free, web-based Google application. Please register.

Dance Fitness

Wednesdays, December 11 and 18

Walton Branch, 6:30 p.m.

Get fit with upbeat dancing. Bring a water bottle and wear comfortable clothing. Please register.



Wrap and Relax

Thursday, December 12

Walton Branch, 1-4 p.m.

Drop in to learn basic wrapping techniques and customize gift tags while enjoying festive music and tea. Bring your own wrapping paper or use provided paper, while supplies last.

Dungeons & Dragons

Thursday, December 12

Main Library, 6:30 p.m.

Bring your dice and characters for a magic-filled journey or choose from a selection of premade adventurers waiting to explore. All levels welcome. Please register.

T'ai Chi

Friday, December 13

Scheben Branch, 2:30 p.m.

Improve balance, strength and flexibility with this gentle form of T'ai Chi that is beneficial for arthritis and fall prevention. Appropriate for all experience levels.

Take and Make: Christmas Simmer Scents

Monday, December 16

Florence Branch

Pick up a kit to enhance the festive ambiance of your home with this sweet-smelling starter pack of simmer pot ingredients, while supplies last.

Wine Cork Candle Ornament

Monday, December 16

Scheben Branch, 2 p.m.

Create a corky fire-free candle to light up your mantel or tree. Please register.

Recycled Paper Decor

Tuesday, December 17

Hebron Branch, 6 p.m.

Add sustainability to your festivities with your own eco-friendly creations made from recycled materials. Please register.

BCPL Locations and Book Drops Closed
December 24 and 25

Merry Christmas!

National Card Game Day

Saturday, December 28

Walton Branch, 10 a.m.-noon

Turn up aces for National Card Game Day! Celebrate with your favorite card games or learn a new one. Light snacks and water provided.

BCPL Locations and Book Drops

Close at 5 p.m.

December 31

Happy New Year!



Call the Community Events Liaison at 859-292-3393 at least one week in advance if special accommodations are needed.

Stay Up to Date!

Follow Us on Social



SMART Dog School Presents:

Puppies for Presents

Monday, December 9
Scheben Branch
6:30 p.m.



REGISTER FOR LIBRARY EVENTS

Go to bcpl.org and locate your program in the Library's event calendar or call 859-342-BOOK (2665) and select the appropriate location. All registrations will close one hour prior to the event unless otherwise noted.

The Children's Theater Presents:

Reindeer Games
Thursday, December 12
Hebron Branch, 6 p.m.

Library Play Date (birth-5 years)

Tuesdays, December 3 and 10
Hebron Branch, 10-11:30 a.m.
Wednesdays, December 4 and 11
Main Library, 10-11:30 a.m.
Thursdays, December 5 and 12
Scheben Branch, 10-11:30 a.m.

Drop in for open play! Explore our toys and activities with your child.

Stuffie Sleepover (grades K-5)

Tuesday, December 3
Main Library, 5 p.m.

Make a friendship bracelet for your stuffie. Hug them goodbye as they prepare for a library sleepover. Stuffies will be ready for pickup on Wednesday, December 4 after 12 p.m. Please register.

Cincinnati Observatory: Comets! (family)

Wednesday, December 4
Walton Branch, 6 p.m.

Discover the icy wonders that traverse our solar system. See how they form with a dry ice demo and explore the night sky with telescope viewing. Please register.



Holly Jolly Slime (grades K-5)

Thursday, December 5
Hebron Branch, 6 p.m.

Get in the holiday spirit by making colorful slime with scents, glitter and other festive add-ins.

stART here (grades 1-5)

Thursday, December 5
Scheben Branch, 6 p.m.

Discover the work of Henri Matisse, who loved to draw (not run) with scissors. Create a colorful collage. Please register.

LEGO® Club (grades 1-5)

Friday, December 6
Main Library, 4-5:30 p.m.

Create an amazing LEGO® brick masterpiece! Supplies are provided and creations will be displayed at the library.

ABC Play With Me (birth-5 years)

Saturday, December 7
Main Library, 10-11:30 a.m.

Tuesday, December 10
Florence Branch, 10-11:30 a.m.

Learn and explore through play by participating in activities that promote healthy development and learning. Please register.



'Tis the Season (family)

Saturday, December 7
Scheben Branch, 2-3:30 p.m.

Drop in to welcome the season with a craft, a hot cocoa kit, and pictures with Santa. Don't forget your camera!

ArtSmart (grades K-5)

Monday, December 9
Hebron Branch, 6 p.m.

Cookie decorating dates back to the early 14th century. Learn about the history and techniques, then decorate your own cookies. Please register.

Holiday Happenings (3-6 years)

Tuesday, December 10
Scheben Branch, 6:30 p.m.

Add sparkle and shine to create holiday magic by painting a colorful wreath and making a chenille ornament.

Homeschool Sampler (grades 1-5)

Wednesday, December 11
Main Library, 2:30 p.m.

It's a crafternoon! Explore your creativity by making festive book-themed decorations. Please register.

STEAM Punks (grades K-5)

Thursday, December 12
Florence Branch, 4:30 p.m.

It's the Twelve Challenges of STEAMmas! Dissolve candy canes, construct cup Christmas trees, create straw ornaments and more! Please register.

The Children's Theater Presents: Reindeer Games (family)

Thursday, December 12
Hebron Branch, 6 p.m.

Come on down! You are the next contestant on Reindeer Games! Audience members may participate in holiday-themed games, songs and commercials along with Santa's sleigh team!

Paws to Read (grades K-5)

Saturday, December 14
Scheben Branch, 11 a.m.

Practice reading with a certified therapy dog! Please register.

Pokemon™ Game Night (grades K-5)

Monday, December 16
Main Library, 6:30 p.m.

Bring your cards or gaming device. Library decks and game mats available. No trading.

ARTventures (grades K-5)

Tuesday, December 17
Walton Branch, 6 p.m.

Create magical winter art with water-colors and puffy paint. It's the process, not the product. Please register.

Madcap Puppets Presents: The Nutcracker (family)

Tuesday, December 17
Main Library, 6 p.m.

Clara needs a little help from the Nutcracker to keep the Sugarplum Fairy from spoiling their holiday festival. Madcap twists this classic story into a fantastically funny tale, filled with giant puppets and comical characters.

Plushie Playtime (2-5 years)

Wednesday, December 18
Walton Branch, 5:30 p.m.

Show your stuffed animals the magic of the library with a playtime made just for them! Play games, make crafts and read to your plushie. Please register.



Call the YS Community Events Liaison at 859-342-2665 Ext. 8142 at least one week in advance if special accommodations are needed.

Mad Scientists (grades 3-5)

Wednesday, December 18
Scheben Branch, 6 p.m.

Use science skills and lab tools to solve a holiday mystery, wire lights and enjoy hot chocolate physics. Please register.

BCPL Locations and Book Drops Closed December 24 and 25

Merry Christmas!

Drive-In: Mouse Matinee (family)

Friday, December 27
Florence Branch, 1-2:30 p.m.

Settle in with popcorn and hot chocolate for holiday stories featuring our favorite mouse! Oh Boy! Please register.



High Five 2025! (family)

Tuesday, December 31
Main Library, 11 a.m.

Ring in the New Year without staying up late! Celebrate with party games, music, a photo booth and crafts.

BCPL Locations and Book Drops Close at 5 p.m.

December 31

Happy New Year!



Resumes in January!

Madcap Puppets Presents:

The Nutcracker
Tuesday, December 17
Main Library, 6 p.m.

books REVIEW

Grab your fluffiest blanket and a cup of hot cocoa!

Becca Cupps of the Hebron Branch shares her favorite holiday books.

Happy All-Idays!

by Cindy Jin
illustrated by Rob Sayegh Jr.

How the Villains Ruined Christmas

by Serena Valentino
illustrated by Joey Chou

La Noche Buena: A Christmas Story

by Antonio Sacre
illustrated by Angela Dominguez

Hanukkah Upside Down

by Elissa Brent Weissman
illustrated by Omer Hoffmann

Winter: A Solstice Story

by Kelsey E. Gross
illustrated by Renata Liwska

Hanukkah Bear

by Eric A. Kimmel
illustrated by Mike Wohnoutka

Walking in a Winter Wonderland

by Richard B. Smith and Felix Bernard
illustrated by Tim Hopgood

The Christmassy Cactus

by Beth Ferry
illustrated by A.N. Kang

My First Kwanzaa

by Karen Katz



REGISTER FOR LIBRARY EVENTS

Go to bcpl.org and locate your program in the Library's event calendar or call 859-342-BOOK (2665) and select the appropriate location. All registrations will close one hour prior to the event unless otherwise noted.

It's a Bake-off!

Cookie Contest

Tuesday, December 10
Hebron Branch, 6 p.m.



Global Goodies (grades 6-12)
Wednesday, December 4
Main Library, 6 p.m.
Celebrate New Year's like teens around the world with traditional snacks, crafts, games and music! Please register.

BIL: Teen Time (grades 6-12)
Monday, December 9
Walton Branch, 4 p.m.
Relax and craft in the BIL. Make your favorite drink even better with a personalized cup! Please register.



Holiday Stop Motion Cinema (grades 6-12)
Monday, December 9
Florence Branch, 6-7:30 p.m.
The holidays have turned into a real Nightmare when a tall skeleton decides to take over Christmas from Sandy Claws. Please register.

Cookie Contest (grades 6-12)
Tuesday, December 10
Hebron Branch, 6 p.m.
Decorate your own unique cookie and decide who the champions will be! Do you have what it takes to win? Please register.

Smash Bros. Club (grades 6-12)
Thursday, December 12
Scheben Branch, 6:30 p.m.
Battle head-to-head with other players for a chance at Ultimate glory! Snacks provided. Please register.



Maker Monday (grades 6-12)
Monday, December 16
Hebron Branch, 6 p.m.
Let it snow! Learn the art of macrame and make a macrame snowflake to take home. Please register.

Snack & Craft (grades 6-12)
Wednesday, December 18
Florence Branch, 4 p.m.
Create a festive snow globe using 3-D printed miniatures! Snacks provided. Please register.

Dread: Santa's SLAY (grades 6-12)
Thursday, December 19
Scheben Branch, 5:30-7:30 p.m.
Each decision requires a pull from the Jenga tower. Santa's coming to town! Are you on the nice or naughty list? Snacks provided. Please register.

BCPL Locations and Book Drops Closed
December 24 and 25
Merry Christmas!

BCPL Locations and Book Drops Close
at 5 p.m.
December 31
Happy New Year!

Call the YS Community Events Liaison at 859-342-2665 Ext. 8142 at least one week in advance if special accommodations are needed.

Holiday Cooking in Boone County

By Hillary Delaney, Local History Associate

As the holidays approach, planning begins for gathering with friends and family, oftentimes around a table of rich, delicious dishes, not normally served at the family dinner table. This is the case historically, as well; families saved the best-fattened livestock and the prettiest examples of canned preserves for special meals. Much as it is today, Boone County's early holiday gatherings were a showcase of the "best available" to place upon the table. Of course, meals would vary from family to family, according to a number of factors including income, cultural tradition, available resources and time.

Some German immigrants to Boone County may have planned ahead for familiar treats from the homeland, such as "Lebkuchen". This German holiday cookie contains candied orange peel, almond and cherry brandy, not typical ingredients found in the local general store. German sausages, which may be on the menu, could either be homemade or purchased from a German butcher in Cincinnati, requiring a day's trip to the city.

On some local tables, greens seasoned with ham or fatback would be a welcome southern side dish. Historically, greens were cultivated and cooked by impoverished and enslaved families throughout the South, including Kentucky, and seasoned to cut their naturally bitter taste. They were once considered "weeds" by many of the privileged class, but are delicious prepared the traditional way, and rich in nutrients. Thanks to necessity and culinary creativity, these dishes now grace the tables of many Americans.

Native Americans gave early colonists their knowledge of corn cultivation. Certainly embraced by an agricultural community like Boone County, corn featured into daily diets as well as holiday meals, from cornbread stuffing to hasty pudding and corn soufflé.

Celebration meal planning would begin well in advance. Families of means may have ordered delicacies sent from New Orleans or St. Louis by steamboat weeks in advance of the arrival of important holiday guests. Local farmers would have an eye on care and feeding of the prize hog throughout the year, which would ultimately grace the holiday table and fill the smokehouse. Garden cooks would have spent many hot hours in the kitchen canning the summer's best for celebrations in the autumn and winter.

Martha Dinsmore (1797-1859) left a treasure trove of her own favorite recipes among the collection at the Dinsmore homestead. Her recipe for "French Cake" sounds special enough for the holiday table. The ingredients included the following: 1 lb. white sugar, ¾ lb. butter, 1 lb. flour, 1 lb. citron, the whites of ten eggs and a glass of wine. Preparation and instruction were not included with the recipe, but one can assume the wine would go into the cake, not the baker.

Cooking methods have changed, but enjoyment of holiday treats has remained. For historical local recipes, early issues of the Boone County Recorder (1875-1880) contain delicious holiday goodies sure to please the modern palate.



Archive and History Center Information

about

With 7000+ physical items, 4000+ digital items and 5 experts, the Archive and History Center at Boone County Public Library is the foremost authority in Boone County local history and genealogy.

desk hours

Monday-Friday 9 a.m.-5 p.m.
Saturday 1 p.m.-5 p.m.

contact us

859-342-2665 Ext. 8134
historycenterhelp@bcpl.org

Boone County Public Library
1786 Burlington Pike
Burlington, KY 41005

A Snapshot in History



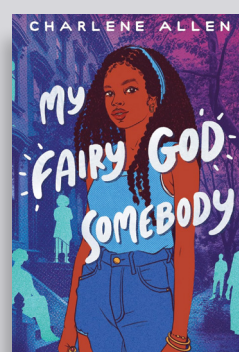
Joyce and Denny McNeely in front of their home at Mill & 2nd Streets November, 1966

-BCPL Digital Archive

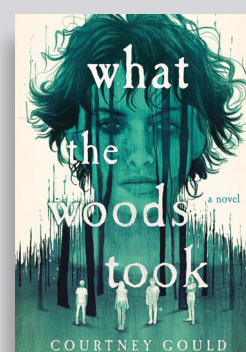
TEEN new releases



Heavenly Tyrant
Iron Widow
by Xiran Jay Zhao



My Fairy God Somebody
by Charlene Allen



What the Woods Took
by Courtney Gould



Concerts

BCPL brings you a calendar of live music from a variety of musical artists!

Please bring your own chair to the outdoor concerts.

Bands are subject to change without notice.

 Call the Community Events Liaison at 859-292-3393 at least one week in advance if special accommodations are needed.

december

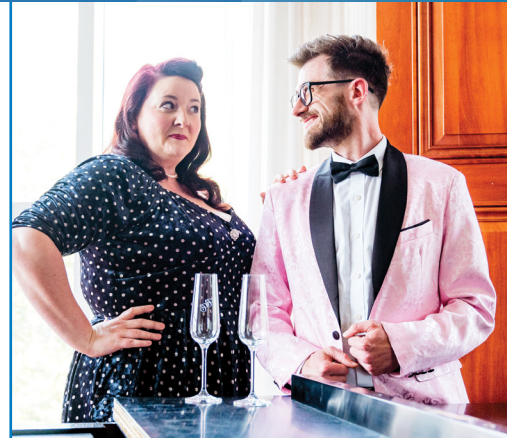
Florence Community Band: A Christmas Festival
Saturday, December 7
Main Library, 2 p.m.
 Concert band holiday music

A Merry Little Christmas Cabaret
Thursday, December 12
Main Library, 7 p.m.
 Playful, elegant and cozy renditions of holiday favorites

Midwinter and New Years Concert
Sunday, December 29
Walton Branch, 2 p.m.
 Frank and Nancy Bick Clark sing traditional songs accompanied by celtic harp, bodhran drum and recorder

january

String Theory
Friday, January 10
Main Library, 7 p.m.
 Rock, country, and folk favorites from the 60s and beyond



A Merry Little Christmas Cabaret - December 12



Midwinter and New Years Concert - December 29

Boone Innovation Lab Spotlight

The Cricut Maker is Your Ultimate Companion for DIY Projects!

Unleash your creativity with a wide range of items, from paper crafts to custom apparel. The Cricut Maker cuts through hundreds of materials, from delicate fabrics to sturdy mat board. With various tool attachments, you can also engrave, deboss and write, opening up endless possibilities.

Use the Cricut Design Space to bring your ideas to life, choosing from thousands of images and fonts directly available in-app, or upload your own designs in JPG, PNG or SVG format.

Don't forget to bring the materials you need, like paper or vinyl. Multiple blades and tools are available, including the Cricut HeatPress and Cricut Pens. Cutting mats, infusible ink markers and transfer tape are also available, while supplies last.

 Book your appointment at bcpl.org/bil



BIL Information

about

Located at the Main Library, Hebron Branch and Walton Branch, the BIL is a place to create, learn, and preserve memories. For more information, visit bcpl.org/bil.

hours

Hours vary according to staff availability. Appointments are required.

equipment

Equipment varies across locations. Visit bcpl.org/bil to reserve the following for use in the BIL.

Audio/Visual

- green screen
- microphones with POP filter
- photo cube light set-up
- media conversion station

Crafting/Sewing

- sewing machine
- quilting machine
- embroidery machine
- serger
- button maker

Creator Group

- 3D printers
- xTool
- Cricut
- laser cutter
- poster printer
- sublimation printer
- heat press

Computers

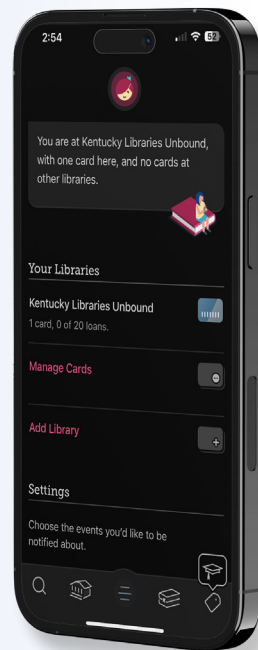
- Wacom Tablet



Digital Resource



Libby.



Overdrive is making changes KLU and Libby Are Adding a PIN

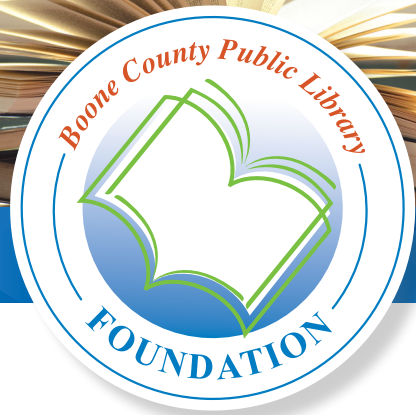
Starting Monday, November 18, KLU/Libby will require a library card number and a PIN number to access your account. Users will receive a "Verify Card" button prompting you to input your information. This update will lead to a more secure and advanced connection.

Your PIN number is the same PIN used to access "My Account" on bcpl.org and the BCPL App. The default PIN is set using the last 4 digits of the phone number on your account. If you forgot your PIN, please contact us at 859-342-2665, and we will reset your PIN to the default.

This change will bring about exciting upgrades including an automatic move of your holds to a new card number when a replacement card is issued.



eBooks • audiobooks • and more



Contributions will enhance and support our mission statement beyond the means of public funding.

Ways to make a donation:

- PayPal
- Check
- Horizon Community Fund
- Kroger Community Rewards

For more information or to make a donation, visit bcpl.org/foundation. All donations are tax-deductible; an acknowledgment letter will be sent to the donor.

Buy the Book

Buy the Book sells used books, movies, music and more at bargain prices! Located on the first floor at the Main Library in Burlington. Open during library hours.

On Display

- Model Cars**
December 1-31
Scheben Branch
See a variety of mini vehicles.
- Snow Globes**
December 1-31
Walton Branch
Discover the wintery worlds of snow globes.
- In the Loop**
Florence Branch
December 1-31
View holiday-themed crochet.

Curt Bessette Art Gallery

The Curt Bessette Art Gallery is located on the first floor of the Main Library. It features work by regional and national artists, as well as special exhibits. The gallery gives local artists a chance to display their work for sale.

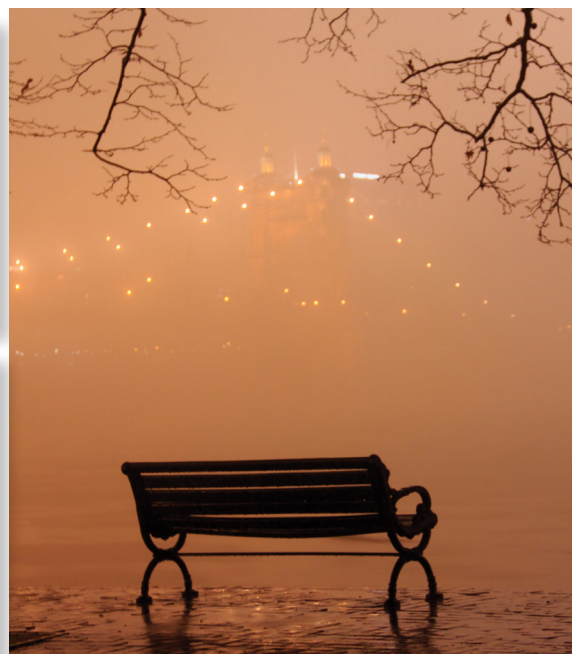
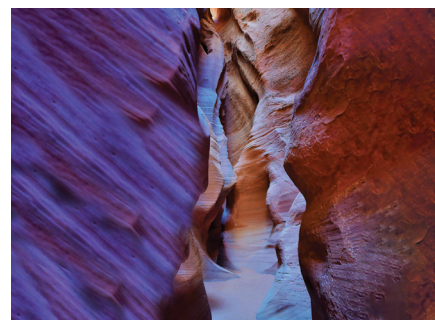
The namesake of the gallery, Curt Bessette, was a quiet child who spent many hours drawing and creating art of the people and scenes around him. As time passed, his interest in art and talent for various artistic styles only grew until he became known by his peers as the Artist. Mr. Bessette also served on the Boone County Public Library Board of Trustees from July 2016 to February 2017.

On Exhibit

Debbie Ponder, Photography December 12 - January 14 Main Library, Curt Bessette Art Gallery

A published, award winning, professional photographer, Debbie Ponder participates in regional art shows and has been sought out by travel publications for her work. Her photography journey started in high school when she trained with professionals at Pogue's Department Store in Cincinnati. She further developed her artistry by attending journalism and photography seminars at the University of Kentucky.

After a trip to Bryce Canyon, Utah and Page, Arizona in 2022, she decided to make her work public. Her photographs are centered around unique views and presentations. She enjoys capturing panoramic scenes using multiple exposures and varying perspectives. Many of her works are printed on aluminum to maintain the detail, clarity and beauty of the scenes. Debbie resides in Northern Kentucky.



Book Discussion Groups

To request a book, call 859-342-BOOK (2665) or email the group leader.

Best of the Best
Thursday, December 5
Florence Branch, 3 p.m.
Emma by Jane Austen
Read and discuss bestselling novels.
Leader Michael: mstulz@bcpl.org

Classics Unfolded
Monday, December 9
Walton Branch, 6 p.m.
And Then There Were None
by Agatha Christie
Encounter timeless tales in new ways.
Titles change quarterly.
Leader Jessica: jmarkink@bcpl.org

Chapter and Verse
Tuesday, December 10
Scheben Branch, 6:30 p.m.
The Christmas Joy Ride
by Melody Carlson
Read everything fiction to biographies.
Leader Shaun: spowell@bcpl.org

Thrillers and Chillers
Thursday, December 12
Main Library, 10 a.m.
Readers' Choice: Holiday Thrillers
Read suspense, mystery and true crime.
Leader Alisa: asnow@bcpl.org

Chick Picks
Thursday, December 19
Main Library, 10 a.m.
Confessions by Kanee Minato
Women of all ages read a mix of genres.
Leader Karen: khelmle@bcpl.org

Monday 4 Mystery
Monday, December 23
Florence Branch, 6:30 p.m.
The Cartographers by Peng Shepherd
Explore mystery and suspense novels.
Leader Kevin: kwadlow@bcpl.org



Mobile Apps

BCPL App

Download the BCPL app from Apple's App Store or Google Play to search for items, manage your account, browse Library events and more.



Libby

Download the Libby app to access our expansive Kentucky Libraries Unbound digital collection. In addition, explore KLU Extras such as:



ArtistWorks
Learn to play an instrument.

Great Courses
Learn about various subjects from the world's top instructors.

IndieFlix
Watch independent films.

Qello
Stream concerts and music documentaries.

Genre Author List

Science Fiction tells tales of discovery, adventure, the strange and unknown. From space travel to AI, this genre will introduce you to new worlds and perspectives.

- | | | |
|------------------------|-----------------------|--------------------------|
| Andy Weir | Victor Lavalle | Ursula K. Le Guin |
| Ann Leckie | Neal Asher | Nathan Ballingrud |
| Neal Stephenson | Ted Chiang | Yume Kitasei |
| Annalee Newitz | Liu Cixin | Malka Ann Older |
| John Scalzi | P. Djèlí Clark | Justin Cronin |



For more recommendations, visit bcpl.org/books.

SIX locations to serve you – one phone number: 859-342-BOOK (2665) www.bcpl.org #CheckOutBCPL

MAIN LIBRARY

1786 Burlington Pike, Burlington, KY 41005
 Monday-Thursday 9am-9pm
 Friday 9am-6pm
 Saturday 9am-5pm
 Sunday 1-5pm

WALTON BRANCH

13000 Towne Center Dr, Walton, KY 41094
 Monday-Thursday 9am-8pm
 Friday 9am-6pm
 Saturday 9am-5pm
 Sunday 1-5pm

FLORENCE BRANCH

7425 US 42, Florence, KY 41042
 Monday-Thursday 9am-8pm
 Friday 9am-6pm
 Saturday 9am-5pm

SCHEBEN BRANCH

8899 US 42, Union, KY 41091
 Monday-Thursday 9am-8pm
 Friday 9am-6pm
 Saturday 9am-5pm
 Sunday 1-5pm

HEBRON BRANCH

1863 North Bend Rd, Hebron, KY 41048
 Monday-Thursday 9am-8pm
 Friday 9am-6pm
 Saturday 9am-5pm
 Sunday 1-5pm

CHAPIN MEMORIAL LIBRARY

6517 Market Street, Petersburg, KY 41080
 Monday-Thursday 11am-7pm
 Friday 10am-6pm
 Saturday 10am-5pm
 STAFF AVAILABLE:
 Tuesday & Wednesday 2-7pm
 Thursday 1-7pm

Meet the BCPL Team

Tracey Howerton, Local History Librarian

I am the Local History Librarian in the Archive and History Center at BCPL, managing the physical collections donated by area individuals, families and organizations, as well as providing user-center reference and program services to community members.

I enjoy local history research and writing. I take pride in a published article on Dr. B. F. Stevenson of Boone County, which ran in the December 2022 issue of Northern Kentucky Heritage magazine. I have also written blogs on various Boone County topics, such as the Frank S. Milburn Papers and the Loder Diaries.

Prior to BCPL, I worked at the Nashville Public Library's Special Collections Division for 11 years, beginning my firsthand experience in the library and archives field. While working at NPL, I earned my Master of Library and Information Science, with an Archival Concentration, degree from the University of Wisconsin-Milwaukee's School of Information Studies (SOIS) in 2012. In 2014, I moved to Kansas City, Missouri to work at the State Historical Society of Missouri's research center on the

University of Missouri, Kansas City campus. I gained lots of good experience in my 2.5 years in KCMO, providing complex reference service, working with additional kinds of archival collections, and meeting and working with other archivists in the field.

I am originally from a small town in North Central Ohio, but I have happily lived and worked in Austin, Nashville and Kansas City, before landing in the green hills and riverfront landscapes of Boone County.

When I'm not working, I spend my time in the outdoors, walking and hiking, listening to live music, and visiting my family in various parts of Ohio.

