

discover

Boone County Public Library



Discover Local History with

The Archive and History Center

The Archive and History Center at BCPL's Main Library is recognized by the National Park Service's Network to Freedom as a research center for African American and Underground Railroad history.

We offer extensive physical and digital collections, along with expert staff specializing in African American genealogy to help guide visitors through this difficult research. Descendants of enslaved people from Boone County's early communities have collaborated with us to share their family histories and discover more within our records. Visit bcpl.org for more information.

Celebrating
BLACK HISTORY MONTH



The Sleet Family Research

Luvina "Vina" and John Simon Sleet, formerly enslaved but Free before the Civil War, are buried at Beaverlick Baptist Cemetery. Their family's history, preserved through descendants and our records, highlights leadership in African American and integrated churches, landownership before Emancipation, early Black education and Civil War military service. An 1856 bill of sale documents Simon's transfer to his wife, Vina, a "Free Black woman". Earlier records show her and her daughter's manumission in 1847, making them among Boone County's earliest Free African Americans.

Sleet family descendants are experienced researchers who often visit the Archive and History Center to conduct research independently and with staff assistance, offering a powerful example of what can be discovered in African American genealogy.

explore events & workshops for ADULTS

REGISTER FOR LIBRARY EVENTS

Go to bcpl.org and locate your program in the Library's event calendar or call 859-342-BOOK (2665) and select the appropriate location. All registrations will close one hour prior to the event unless otherwise noted.

Weekly Programs

Yoga for Healthy Weight

Mondays
Main Library, 6 p.m.

Wednesdays
Hebron Branch, 6 p.m.

Thursdays
Scheben Branch, 6 p.m.

Bring a yoga mat. \$30 monthly. Register at 859-334-2117 or boonecountyky.org/departments/parks.

Easy English Group

Wednesdays
Florence Branch, noon
Improve your English reading and speaking skills in a low-stress setting. All levels welcome.

Chair Yoga

Thursdays
Walton Branch, 1 p.m.
Relax and enhance your sense of well-being with gentle movements and meditation. No experience needed.

On Display

Flying Cardinals

February 1-28
Scheben Branch
View a selection of model aviation from the Flying Cardinals of Northern Kentucky.

Mugs

February 1-28
Walton Branch
View a collection of cute and cozy mugs.

United Way Free Tax Prep: Drop-Off Service

Mondays through March 31
Florence Branch, 5-6 p.m.
Get help with your taxes from trained and certified volunteers. Visit uwgc.org/taxes or call 2-1-1 for more information. No appointments necessary.

SWET DanceFit

Saturdays, February 1 and 15
Hebron Branch, 9:30 a.m.
Try a nonstop, medium to high energy cardio dance class that combines various dance styles. Please register.

Take and Make: I Found a Quilted Heart

Monday, February 3
Walton Branch
Pick up a kit to sew a quilted heart and share the love around the community. Sewing machine required. Learn more at ifoundaquiltedheart.com.

Library Trustee Informational Meeting

Monday, February 3
Main Library, 4-5 p.m.
BCPL's Board of Trustees is accepting applications for volunteer board positions that begin July 2025. Applicants should be dedicated individuals who have a passion for libraries and the ability to effectively advocate for them. Interested individuals must attend this meeting.

Uncle Tom's Cabin: An American Classic?

Monday, February 3
Scheben Branch, 6 p.m.
Explore the creation of this groundbreaking novel, its many adaptations, why this story with its iconic characters was controversial and how Harriet Beecher Stowe's voice still resonates today. Presented by the Harriet Beecher Stowe House.



Kawaii-brary!

Monday, February 3
Florence Branch, 6:30 p.m.
Make your own vintage style cards for Valentine's Day.

Charm Bracelet Making

Tuesday, February 4
Walton Branch, 3 p.m.
Create a unique piece of stylish jewelry to keep or gift to someone. Please register.

Dance Fitness

Tuesday, February 4
Main Library, 6:30 p.m.
Get fit with upbeat dancing. Bring water and wear workout shoes and clothing.

Macrame Mermaid Tail

Thursday, February 6
Hebron Branch, 6 p.m.
Add a splash of sea-inspired charm to your keys or bag! Learn a few easy knots to create a whimsical accessory. Please register.

Budget Bouquets

Friday, February 7
Walton Branch, 4 p.m.
On a budget this Valentine's season? Try your hand at origami roses to give as an extra special homemade gift for your loved ones.

Kaiju Puppet Theater

Saturday, February 8
Florence Branch, 2 p.m.
Craft a felt puppet of a giant monster while watching *Godzilla and Mothra* (1992). Please register.



Bi-Okoto: Rhythm of Our Land

Sunday, February 9
Main Library, 2 p.m.
Journey to West Africa and experience Nigerian, Ghanaian and Guinean culture. Explore their vast histories through authentic songs, folk stories, drumming and dance. Q&A to follow.

Take and Make: Puppetscopes

Monday, February 10
Florence Branch
Pick up a kit to make a paper character from America's favorite puppet ensemble, each complete with their own astrological sign, while supplies last.



Birds in Your Backyard

Monday, February 10
Main Library, 6:30 p.m.
Learn about birds you see in your own backyard. Create a pinecone bird feeder and learn about the 2025 Great Backyard Bird Count. Please register.

Introduction to Puppetry

Tuesday, February 11
Florence Branch, 6:30 p.m.
Explore the broad world of puppetry, its history, styles and performance techniques. Puppeteer Sean Mette will be your guide and offer suggestions for creating your own puppet from everyday materials. Please register.

Writers Group

Tuesday, February 11
Main Library, 7 p.m.
Open to all genres of writing. Share your work with others for feedback, encouragement and inspiration. Email asnow@bcpl.org with guideline questions.

Investing to Build Wealth

Wednesday, February 12
Main Library, 6:30 p.m.
Discover essential strategies to build wealth over time. The Kentucky Financial Empowerment Commission will provide resources and tools for making informed decisions on your financial journey.



Galentine's Day

Thursday, February 13
Scheben Branch, 6:30 p.m.
Celebrate female friendship at the library! Create a mini easel painting, enjoy tasty treats and listen to fun tunes. Bring a friend or make new friends. Please register.

Dungeons & Dragons

Thursday, February 13
Main Library, 6:30 p.m.
Bring your dice and characters for a magic-filled journey or choose from a selection of premade adventurers waiting to explore. All levels welcome. Please register.

T'ai Chi

Fridays, February 14 and 28
Scheben Branch, 2:30 p.m.
Improve balance, strength and flexibility with this gentle form of T'ai Chi that is beneficial for arthritis and fall prevention. Appropriate for all experience levels.

Keep Calm and Carry Yarn

Monday, February 17
Walton Branch, 6 p.m.
Welcome all yarn-minded folks for an hour of community and needle arts. Bring your yarn project to show off, get inspired or get advice. Teaching is available for knitting or crochet.

Book Bricks

Tuesday, February 18
Main Library, 6:30 p.m.
Paint a book cover on a brick to embed your favorite story into your garden. Please register.

Chocolate-Dipped Treasures

Wednesday, February 19
Walton Branch, 6 p.m.
Learn the art of melting and decorating with chocolate to impress your friends at your next gathering. Dip and sample chocolate paired with cookies, fruit, pretzels and bacon. Please register.

Trivia Night

Wednesday, February 19
Main Library, 6:30 p.m.
Play trivia just for fun! Bring your own team or we'll put one together for you.

Ornamental Annuals

Thursday, February 20
Main Library, 6 p.m.
Discuss the selection, design and care of ornamental annuals with Kyra Back, horticulturist and garden designer for the Cincinnati Zoo and Botanical Gardens. Presented by the Friends of Boone County Arboretum. Please register.

Friday Game Social

Friday, February 21
Walton Branch, 10 a.m.
Play various board, card and dice games with new friends!

Comfort Quilts for the Community

Monday, February 24
Main Library, 9:30 a.m.-2:30 p.m.
Sew quilts for community charities.



Bonsai Tree Basics

Tuesday, February 25
Hebron Branch, 6:30 p.m.
Discuss the history, design techniques, tools and care of Bonsai - the Japanese art of shaping miniature trees. Presented by the Bonsai Society of Greater Cincinnati.



Call the Community Events Liaison at 859-292-3393 at least one week in advance if special accommodations are needed.

Take and Make: Page Holder

Wednesday, February 26
Main Library
Pick up a kit to create a page holder out of air-dry clay, perfect for keeping your book open with one hand, while supplies last.

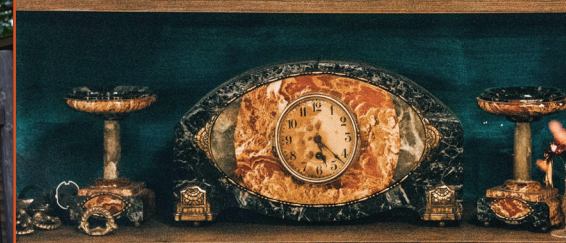
Living with Vintage

Wednesday, February 26
Scheben Branch, 6:30 p.m.
Learn how to find and revamp vintage items for home decor with Janine Bradbury from The Black Goose.

Find and Flip!

Living with Vintage

Wednesday, February 26
Scheben Branch
6:30 p.m.



experience events & workshops for KIDS

REGISTER FOR LIBRARY EVENTS

Go to bcpl.org and locate your program in the Library's event calendar or call 859-342-BOOK (2665) and select the appropriate location. All registrations will close one hour prior to the event unless otherwise noted.

Brassy, Bold Sounds!

Peanut Butter & Jam Sessions

Monday, February 24
Scheben Branch, 6 p.m.



ABC Play With Me (birth-5 years)
Saturday, February 1
Main Library, 10-11:30 a.m.

Tuesdays, February 11 and 25
Florence Branch, 10-11:30 a.m.

Learn and explore through play by participating in activities that promote healthy development and learning.

Groundhog-a-Palooza (family)
Saturday, February 1
Florence Branch, 3 p.m.

Celebrate Groundhog's Day with top hats, shadow crafts and weather predictions. Fun that will make you want it to happen again and again!

Paws to Read (grades K-5)
Monday, February 3
Scheben Branch, 6 p.m.

Practice reading with a certified therapy dog! Please register.

ArtSmart (grades K-5)
Thursday, February 6
Scheben Branch, 6 p.m.

Monday, February 10
Hebron Branch, 6 p.m.

Unleash creativity while learning about an artist. Explore techniques and materials to create your masterpiece.

LEGO® Club (grades 1-5)
Friday, February 7
Main Library, 4 p.m.

Create an amazing LEGO® brick masterpiece! Supplies are provided and creations will be displayed at the library.



Toddler Bowl (2-5 years)
Saturday, February 8
Florence Branch, 10 a.m.

It's the greatest game day in sports! Little athletes will build muscles and skills by throwing, catching, kicking and playing at their own pace.

Bi-Okoto: Rhythm of Our Land (all ages)
Sunday, February 9
Main Library, 2 p.m.

Journey to West Africa and experience Nigerian, Ghanaian and Guinean culture. Explore their vast histories through authentic songs, folk stories, drumming and dance. Q&A to follow.



Take and Make: Valentine's Day (3-5 years)
Monday, February 10
Walton Branch

Pick up a kit and spread the love with a Valentine's Day craft, while supplies last.

Charlie Cadabra (family)
Tuesday, February 11
Hebron Branch, 6 p.m.

Abra-CAT-abra! Celebrate everything Seussical with books, magic and zany creatures.

Homeschool Sampler (grades 1-5)
Wednesday, February 12
Main Library, 2:30 p.m.

Wednesday, February 26
Walton Branch, 2:30 p.m.

Mingle with other homeschool families through community presentations, crafts and experiences. Please register.

Red Furry Monster's Birthday (2-5 years)
Thursday, February 13
Hebron Branch, 6 p.m.

Celebrate this puppet's special day! Paint your own Rocko, toss cookies to a hungry monster, and jump into the dance party!

Pages and Paws (grades K-5)
Thursday, February 13
Florence Branch, 6 p.m.

Tuesday, February 18
Hebron Branch, 6 p.m.

Sunday, February 23
Main Library, 2 p.m.

Practice reading with a certified therapy dog! Please register.

Itty Bitty Playdate (birth-2 years)
Saturday, February 15
Scheben Branch, 10 a.m.

Enjoy playtime with developmentally appropriate play stations and activities.

Community Helper Meet and Greet (family)
Monday, February 17
Main Library, 2 p.m.

Meet some special people who help us in our community, then prepare a craft to give to someone you appreciate.

Full STEAM Ahead (2-5 years)
Monday, February 17
Hebron Branch, 6 p.m.

See what size box you can fit in and experience milk fireworks while exploring colors, shapes and sizes.



Call the YS Community Events Liaison at 859-342-2665 Ext. 8142 at least one week in advance if special accommodations are needed.

Pokemon™ Game Night (grades K-5)
Monday, February 17
Main Library, 6:30 p.m.

Bring your cards or gaming device to battle players. Library decks and game mats available. No trading.

Mad Scientists (grades 3-5)
Wednesday, February 19
Scheben Branch, 6 p.m.

Learn about the properties of different chemicals in the perfect playdough recipe. Use your dough to build a city.

Nimble Ninjas Obstacle Course (3-5 years)
Saturday, February 22
Scheben Branch, 11 a.m.

Creep, crouch and crawl through a challenging route to earn a hachimaki headband, while supplies last.

River City Puppets: Upside Down Fairy Town (family)
Sunday, February 23
Walton Branch, 2 p.m.

The fairy tales are all mixed up! Help untangle the stories in time to celebrate Fairy Tale Day. Please register.

Peanut Butter & Jam Sessions (family)
Monday, February 24
Scheben Branch, 6 p.m.

This quintet will make you want to join the parade and toot your own horn after hearing their instruments' bold, brazen and brassy sounds.



George Crum, Inventor of Yum (grades K-5)
Thursday, February 27
Main Library, 6 p.m.

Celebrate Black History Month by discovering how George Crum made the first potato chips. Create your own recipe, design a bag and take part in a chip challenge.

books REVIEW

Cook from a book with these scrumptious titles selected by Cindy Yeager, Youth Collection Development Librarian. Each contains a recipe for a delicious dish!

Soul Food Sunday
by Winsome Bingham
illustrated by C.G. Esperanza

Bilal Cooks Daal
by Aisha Saeed
illustrated by Anoosha Syed

Amy Wu and the Perfect Bao
by Kat Zhang
illustrated by Charlene Chua

Every Night is Pizza Night
by J. Kenji López-Alt
illustrated by Gianna Ruggiero

Bee-bim Bop!
by Linda Sue Park
illustrated by Ho Baek Lee

Freedom Soup
by Tami Charles
illustrated by Jacqueline Alcántara

Federico and the Wolf
by Rebecca J. Gomez
illustrated by Elisa Chavarri

Fry Bread
by Kevin Noble Maillard
illustrated by Juana Martinez-Neal



story TIME

Weekly through April 25

Build language and literacy skills through interactive stories, rhymes and music.

Baby Time (birth-18 months)
Main Library
• Wed: 9:30 a.m.

Scheben Branch
• Fri: 9:30 a.m.

Bookworms (3½-5+ years)
Walton Branch
• Mon: 11 a.m.

Main Library
• Tues: 11 a.m.

Scheben Branch
• Thurs: 10 a.m.

Tiny Tots (18 months- 2½ years)
Scheben Branch
• Mon: 10 a.m.

• Wed: 10 a.m.

Hebron Branch
• Tues: 10 a.m.

Main Library
• Thurs: 9:30 a.m.

• Thurs: 11 a.m.

Toddler Tales (2½-3½ years)
Main Library
• Mon: 9:30 a.m.

• Wed: 11 a.m.

Scheben Branch
• Tues: 11 a.m.

Walton Branch
• Wed: 9:30 a.m.

Stories with Art (3-6 years)
Scheben Branch
• Tues: 6:30 p.m.

Sleepy Tales (birth-5+ years)
Florence Branch
• Mon: 5 p.m.

Walton Branch
• Thurs: 6:30 p.m.

Sensory Storytime (2-5 years)
Main Library
• Fri: 11 a.m.

* Please register.

REGISTER FOR LIBRARY EVENTS

Go to bcpl.org and locate your program in the Library's event calendar or call 859-342-BOOK (2665) and select the appropriate location. All registrations will close one hour prior to the event unless otherwise noted.

Are You Ready For It?

The Eras Party

Monday, February 17
Walton Branch, 6 p.m.

Dungeons and Dragons (grades 6-12)
Fridays
Scheben Branch, 4-5:30 p.m.
Play D&D 5th Edition! All levels welcome. Characters are ready or bring your own. To be a dungeon or game master, email dpina@bcpl.org.

Global Goodies (grades 6-12)
Wednesday, February 5
Main Library, 6 p.m.

Take a trip to France! While sampling madeleine cookies, hear from a guest about the fashion industry and make perfume/cologne. Please register.

Bi-Okoto: Rhythm of Our Land (all ages)
Sunday, February 9

Main Library, 2 p.m.

Journey to West Africa and experience Nigerian, Ghanaian and Guinean culture. Explore their vast histories through authentic songs, folk stories, drumming and dance. Q&A to follow.

Teen Time (grades 6-12)

Monday, February 10
Walton Branch, 4 p.m.

Take a break and have fun playing tabletop and card games with other teens.

 Call the YS Community Events Liaison at 859-342-2665 Ext. 8142 at least one week in advance if special accommodations are needed.

Nintendo™ Club (grades 6-12)

Thursday, February 13
Scheben Branch, 6:30 p.m.

We love playing Nintendo™ games! Battle for Ultimate Glory or exchange friend codes with new friends. Snacks provided.

Anime Afternoon (grades 6-12)

Wednesday, February 19
Florence Branch, 5 p.m.

Watch anime, share what manga you're reading, and have some snacks.

The Eras Party (grades 6-12)

Monday, February 17
Walton Branch, 6 p.m.

Celebrate your favorite pop star! Dress in style, make friendship bracelets, play lyrical games and capture the day with a photo booth.

BIL: Maker Monday (grades 6-12)

Monday, February 24
Hebron Branch, 6 p.m.

Create a unique button. Design your own or choose one of ours.

Fandom Party (grades 6-12)

Thursday, February 27
Scheben Branch, 5:30-7 p.m.

Meet local fans and learn about new shows and games. Rep your fandom by making a keychain or bookmark with the Mobile BIL.

Joseph Kite's Fight for Freedom

By Hillary Delaney, Local History Associate

In 1826, Joseph Kite was fighting for his freedom in the courts of Madison County, KY. Even though he was the plaintiff in the suit, Joseph was required to remain in jail while the defendants walked free. Such was the nature of the laws of enslavement. Joseph was born in Virginia around 1798. He and other family members were brought to Boone County by their enslaver George Kite, a Revolutionary War soldier. Near the end of his life, George Kite freed all of the people he enslaved three times over; once, through a deed filed in Boone County on February 7, 1825, again in the Cincinnati courts on April 6th, 1825 and a third time through his 1826 will, filed in Boone County. Sadly, all of this documentation did not secure the newfound freedom of Joseph and his family.

In April 1825, George Kite rented property in Butler County, OH, and moved there with the people he intended to free, possibly as a way to reinforce their free status. After a single growing season, George Kite returned to Kentucky, leaving behind Joseph, his grandmother, aunt, sister and her children. Several months after his return, George Kite died in Boone County.

The family's freedom did not last. Late one April evening in 1826, when Joseph was away in Cincinnati, the women and children (including an infant born on Ohio soil) were kidnapped. Upon his return, Joseph wasted no time; pleading his case to Governor Morrow who produced an order for their return. The sheriff and another man left for Kentucky to serve the papers, bringing Joseph to identify his family members. They were met by nine armed men led by William Daniel, who was married to George Kite's granddaughter.

Joseph was claimed as a slave, his hands tied and a rope around his neck, forced to walk 160 miles in two days to Richmond, KY where he was sold to Jefferson Curle. Somehow, Joseph convinced the authorities he had been illegally confined and sold.

In July 1826 a case was opened in Madison County Circuit Court. Joseph's witnesses, including neighbors from Boone and Butler County and Cincinnati's first millionaire, Nicholas Longworth, were convincing. The court found for Joseph in September 1827. He was awarded \$1 plus court costs and his freedom.

“
Joe Kite makes affidavit that he has instituted a suit in the Madison Circuit Court against William Daniel & Jefferson Curle for the purpose of trying his right to freedom- that he is a free man of color that if he gets justice when said suit is tried upon its merits, it will be decided in his favor
”

Joseph returned to Ohio, successfully sued for the freedom of his family, and went on to secure the freedom of several other enslaved people by purchasing them himself. Among these were Joseph's son Elijah Kite and his wife and child. After Elijah's family escaped Boone County enslaver Wilson Harper, Joseph negotiated a price and nearly lost his home, but ultimately was able to secure their freedom. Joseph Kite died in 1884, having lived an eventful and heroic life.



Archive and History Center Information

about

With 7000+ physical items, 4000+ digital items and 5 experts, the Archive and History Center at Boone County Public Library is the foremost authority in Boone County local history and genealogy.

desk hours

Monday-Friday 9 a.m.-5 p.m.
Saturday 1 p.m.-5 p.m.

contact us

859-342-2665 Ext. 8134
historycenterhelp@bcpl.org

Boone County Public Library
1786 Burlington Pike
Burlington, KY 41005

A Snapshot in History



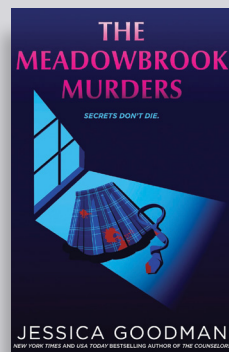
Burlington Collection - Boone County Courthouse - Built in 1889

-BCPL Digital Archive

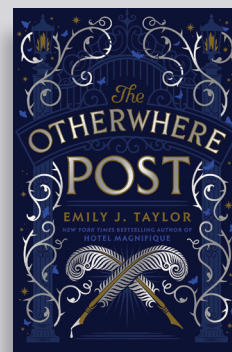
TEEN new releases



Under the Same Stars
by Libba Bray



The Meadowbrook Murders
by Jessica Goodman



The Otherwhere Post
by Emily J. Taylor



A Burning in the Bones
Waxways
by Scott Reintgen



BIL Information

about

Located at the Main Library, Hebron Branch and Walton Branch, the BIL is a place to create, learn and preserve memories. For more information, visit bcpl.org/bil.

hours

Hours vary according to staff availability. Appointments are required.

equipment

Equipment varies across locations. Visit bcpl.org/bil to reserve the following for use in the BIL.

Audio/Visual

- green screen
- microphones with POP filter
- photo cube light set-up
- media conversion station

Crafting/Sewing

- sewing machine
- quilting machine
- embroidery machine
- serger
- button maker

Creator Group

- 3D printers
- smart cutter
- laser cutter
- poster printer
- sublimation printer
- heat press

Computers

- digital drawing tablet

Concerts

BCPL brings you a calendar of live music from a variety of musical artists!

Bands are subject to change without notice.

Call the Community Events Liaison at 859-292-3393 at least one week in advance if special accommodations are needed.

february

Lagniappe
Friday, February 7
Main Library, 7 p.m.
Traditional Cajun music

march

Hills of Kentucky Dulcimers
Sunday, March 16
Walton Branch, 2:30 p.m.
Traditional Appalachian Dulcimers

Matt Tolentino Band
Friday, March 21
Main Library, 7 p.m.
Jazz, swing and pop from the 20s and 30s

april

The Pac
Saturday, April 5
Scheben Branch, 2 p.m.
Rock and country favorites from the 50s and 60s

Squeeze Play Music
Friday, April 25
Main Library, 7 p.m.
Popular tunes played by an accordion ensemble



Lagniappe - February 7



Hills of Kentucky Dulcimers - March 16



Matt Tolentino Band - March 21

Get creative!

Boone Innovation Labs of BCPL

Boone County Public Library provides a place to get inspired, learn new skills and preserve memories through the Boone Innovation Labs (BIL). The BILs offer technological and creative opportunities for entrepreneurs, students and crafters of all levels. They are equipped with everything needed to start a project including support from knowledgeable staff.

The BILs are located at the Main Library in Burlington, the Hebron Branch in Hebron and the Walton Branch in Walton. Reservations are required to use the equipment and can be made through our website at bcpl.org/bil.

In addition, the Mobile BIL provides access to hands-on building and experiential learning in the community. Visits can be scheduled to schools, summer camps, older adult residential facilities and other organizations located in Boone County. For more information or to check availability, please email mobilebil@bcpl.org.



Book your appointment at
bcpl.org/bil

Service Spotlight



Access your holds with the convenience of Curbside Pick-up or Drive-thru

The cold months are upon us so pick up your library holds from the warmth of your car with our Curbside Pick-up service!

Browse our catalog online and place holds with your library card through BCPL's website or app. Choose the library location of your choice for pick-up, and we'll notify you as soon as your items are available.

Once your items are ready, head to your selected location and park in a designated curbside space. Call 859-342-BOOK and select Main, Scheben or Florence to notify our staff of your arrival. We'll swiftly check out your items and bring them to your vehicle, all while you stay warm! **At the Hebron Branch and Walton Branch, skip curbside and pull up to the convenient drive-thru.**

Remember to bring your library card for a smooth transaction. If you don't have a library card, stop by any location to sign up.



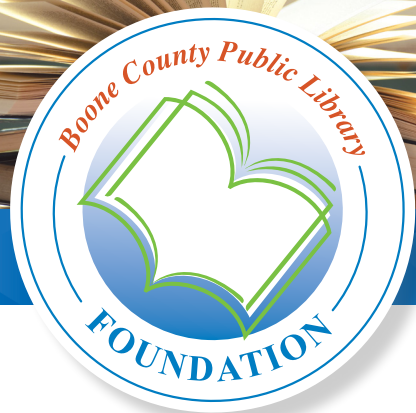
BIL - Hebron Branch



BIL - Main Library



BIL - Walton Branch



Contributions will enhance and support our mission statement beyond the means of public funding.

Ways to make a donation:

- PayPal
- Check
- Horizon Community Fund
- Kroger Community Rewards

For more information or to make a donation, visit bcpl.org/foundation. All donations are tax-deductible; an acknowledgment letter will be sent to the donor.

Board of Trustees

The Board of Trustees meets on the third Monday of each month at 4 p.m.

February Board Meeting
Monday, February 17
Main Library

March Board Meeting
Monday, March 17
Main Library

April Board Meeting
Monday, April 21
Walton Branch

May Board Meeting
Monday, May 19
Main Library

June Board Meeting
Monday, June 16
Main Library

Receive FREE books to keep with Dolly Parton's Imagination Library!

Dolly Parton's Imagination Library puts books into the hands and hearts of our Boone County children and children across the world!

Boone County is partnering with the Imagination Library to increase kindergarten readiness with a great selection of books available at home.

Through this partnership, **every registered child from birth to age 5 in Boone County** will receive a hand-selected, age-appropriate, high-quality book each month for **FREE** and mailed to your home.

This free book subscription is made possible by the generous donation/funds from the partnership between Dolly Parton's Imagination Library, Boone County Public Library, Boone County Public Library Foundation, Boone County School District and Walton-Verona Independent School District.

Photo provided by Dolly Parton's Imagination Library.



To sign up for the Imagination Library, please visit bcpl.org



Book Discussion Groups

To request a book, call 859-342-BOOK (2665) or email the group leader.

Best of the Best

Thursday, February 6
Florence Branch, 3 p.m.

First Lie Wins by Ashley Elston
Read and discuss bestselling novels.
Leader Michael: mstulz@bcpl.org

Classics Unfolded

Monday, February 10
Walton Branch, 6 p.m.

The Adventures of Huckleberry Finn by Mark Twain
Encounter timeless tales in new ways.
Titles change quarterly.
Leader Jessica: jmarkink@bcpl.org

Chapter and Verse

Tuesday, February 11
Scheben Branch, 6:30 p.m.

The Thursday Murder Club by Richard Osman
Read everything fiction to biographies.
Leader Shaun: spowell@bcpl.org

Thrillers and Chillers

Thursday, February 13
Main Library, 10 a.m.

Death of a Dreamer by M.C. Beaton
Read suspense, mystery and true crime.
Leader Alisa: asnow@bcpl.org

Silent Book Club

Monday, February 17
Hebron Branch, 6 p.m.

Bring your own book and read with no pressure for discussion.
Leader Gelene: gmorales@bcpl.org

Afternoon Delight

Tuesday, February 18
Walton Branch, 3 p.m.

Theme of the month: Friends to Lovers
Read and discuss a romance trope.
Leader Marissa: mwinfield@bcpl.org

Chick Picks

Thursday, February 20
Main Library, 10 a.m.

The Frozen River by Ariel Lawhon
Women of all ages read a mix of genres.
Leader Karen: khelmle@bcpl.org

Books to Savor

Sunday, February 23
Walton Branch, 2 p.m.

Angry Housewives Eating Bon Bons by Lorna Landvik
Read culinary-inspired novels and share recipes.
Leader Gabi: grichardson@bcpl.org

Monday 4 Mystery

Monday, February 24
Florence Branch, 6:30 p.m.

The Woman in the Mirror by Rebecca James
Explore mystery and suspense novels.
Leader Kevin: kwadlow@bcpl.org



Mobile Apps

BCPL App

Download the BCPL app from Apple's App Store or Google Play to search for items, manage your account, browse Library events and more.



Libby

Download the Libby app to access our expansive Kentucky Libraries Unbound digital collection and more.



Genre Author List

The romance genre centers around the themes of love and relationships. A few popular tropes include enemies to lovers, friends to lovers and second chances.

Christina Lauren
Emily Henry
Ali Hazelwood
Tessa Bailey
Katherine Center

Lucy Score
Helen Hoang
Kate Robert
Carley Fortune
Kennedy Ryan

Abby Jimenez
Ashley Poston
Sara Desai
Jennifer Weiner
Rachel Lynn Solomon

romance

For more recommendations, visit bcpl.org/books.

Buy the Book

Buy the Book sells used books, movies, music and more at bargain prices! It is located on the first floor at the Main Library in Burlington and is open during library hours.

Buy the Book

SIX locations to serve you – one phone number: 859-342-BOOK (2665) www.bcpl.org #CheckOutBCPL

MAIN LIBRARY

1786 Burlington Pike, Burlington, KY 41005
Monday-Thursday 9am-9pm
Friday 9am-6pm
Saturday 9am-5pm
Sunday 1-5pm

WALTON BRANCH

13000 Towne Center Dr, Walton, KY 41094
Monday-Thursday 9am-8pm
Friday 9am-6pm
Saturday 9am-5pm
Sunday 1-5pm

FLORENCE BRANCH

7425 US 42, Florence, KY 41042
Monday-Thursday 9am-8pm
Friday 9am-6pm
Saturday 9am-5pm

SCHEBEN BRANCH

8899 US 42, Union, KY 41091
Monday-Thursday 9am-8pm
Friday 9am-6pm
Saturday 9am-5pm
Sunday 1-5pm

HEBRON BRANCH

1863 North Bend Rd, Hebron, KY 41048
Monday-Thursday 9am-8pm
Friday 9am-6pm
Saturday 9am-5pm
Sunday 1-5pm

CHAPIN MEMORIAL LIBRARY

6517 Market Street, Petersburg, KY 41080
Monday-Thursday 11am-7pm
Friday 10am-6pm
Saturday 10am-5pm
STAFF AVAILABLE:
Tuesday & Wednesday 2-7pm
Thursday 1-7pm

Meet the Board of Trustees

Patty Reisz

Patty is a graduate of Baldwin Wallace University, where she earned an undergraduate degree in Business and English Literature and an MBA in Finance. With 30 years of experience in the banking industry, she currently serves as Senior Director of Platform Engineering in Commercial IT at Fifth Third Bank. Over the years, Patty has held roles in retail, operations, risk and technology, and her passion for banking is driven by the continuous opportunities to learn.

Committed to empowering women, Patty is an active participant in Fifth Third Bank's Women's Business Resource group and instrumental in establishing the Women in IT Business Resource Group. This initiative supports female IT employees in achieving their goals and provides educational outreach programs to school-age girls interested in pursuing careers in IT.

Patty joined the BCPL Board in 2024, after moving to Boone County with her husband and vizsla. A lifelong reader, she was drawn to the Hebron Branch and was impressed by the Library's extensive community programs and services. Her volunteer background in community service (volunteering with STEM organizations, serving on boards with Jaycee and

a Cincinnati Community Council), motivated her to take on the role of Trustee. It is an opportunity to combine her love of learning with her commitment to serving the community. Supporting early childhood literacy and services for seniors is a passion.

In her free time, Patty enjoys strength training. She is an avid reader, often juggling a fiction and nonfiction book simultaneously. Patty and her family cherish time at their cabin in Tennessee, where they enjoy hiking, horseback riding, and hosting family and friends. Her travels between Tennessee and home always include a BCPL audiobook.

