

discover

Boone County Public Library

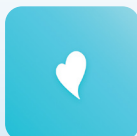


January fun and prizes with the Winter Reading Challenge!

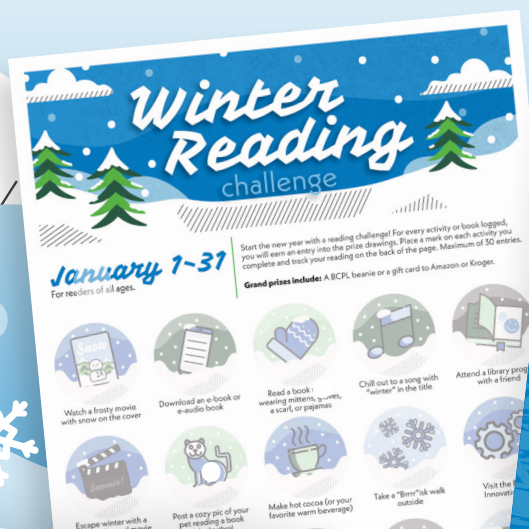
Start the new year with a Winter Reading Challenge for ALL AGES! The challenge is a combination of reading and doing fun activities like completing a puzzle or trying a new recipe. Log up to 15 books and 15 activities (maximum of 30 entries).

For every book and activity logged, participants earn an entry into the grand prize drawings. Grand prizes include a BCPL beanie and a gift card to Amazon or Kroger.

Logging begins January 1 and ends January 31. All activities must be entered by Friday, January 31 at 11:59 p.m. Winners will be drawn on February 1. All prizes must be picked up by February 7.



Tracking your reading has never been easier with the Beanstack Tracker app. Download the app to any device and track your progress. If you prefer a paper log, visit bcpl.org to print.



explore events & workshops for ADULTS

REGISTER FOR LIBRARY EVENTS

Go to bcpl.org and locate your program in the Library's event calendar or call 859-342-BOOK (2665) and select the appropriate location. All registrations will close one hour prior to the event unless otherwise noted.

Weekly Programs

Yoga for Healthy Weight
Mondays
Main Library, 6 p.m.

Wednesdays (no class January 1)
Hebron Branch, 6 p.m.

Thursdays
Scheben Branch, 6 p.m.

Bring a yoga mat. \$30 monthly. Register at 859-334-2117 or boonecountyky.org/departments/parks.

Easy English Group
Wednesdays (no meeting January 1)
Florence Branch, noon

Improve your English reading and speaking skills in a low-stress setting. All levels welcome.

Chair Yoga
Thursdays
Walton Branch, 1 p.m.

Relax and enhance your sense of well-being with gentle movements and meditation. No prior experience necessary. Wear comfortable clothing.

Recycle Holiday Lights!

Recycle Your Holiday String Lights
Through February 1
All locations

Keep your holiday string lights out of the landfill. Bring them to any BCPL location for recycling. Be sure to remove all boxes and bags.

BCPL Locations and Book Drops Closed
Wednesday, January 1
Happy New Year!

SWET DanceFit

Saturdays, January 4 and 18
Hebron Branch, 9:30 a.m.

Try a nonstop, medium to high energy cardio dance class that combines various dance styles. Please register.

Take and Make: Paper Craft Journal
Monday, January 6
Hebron Branch

Pick up a kit to decorate a journal for the new year using string, stickers, buttons and more, while supplies last.

Kawaii-brary!

Monday, January 6
Florence Branch, 6:30 p.m.

Are you a sticker enthusiast who is looking to spruce up your collection? Bring your trade-worthy decals to stick out and swap!

Sorting Family History Photos and Documents

Tuesday, January 7
Main Library, 3-7 p.m.

Drop in with your family photos and genealogy papers to sort and organize. History Center staff will answer your questions about preservation and family history. Email hhall@bcpl.org with questions.

Nerds Night Out

Wednesday, January 8
Walton Branch, 6 p.m.

Hang out with fellow Sci-Fi and Fantasy nerds! Be it movies, comics or games, share your passion for the classic and trendy. All purveyors of spells and lasers welcome.

BIL: Cups and Cocoa
Wednesday, January 8
Main Library, 2:30 p.m.

Learn to use the sublimation mug/tumbler press. Choose from three winter-themed designs, print and transfer to one provided mug. Take home hot cocoa packets. Please register.

Manifest Your Best Year Vision Board
Thursday, January 9
Walton Branch, 6 p.m.

Allow the magic of manifestation to work in your life by making a visual representation of your dreams and goals. Choose words, phrases and pictures to focus on in the new year!



Introduction to ASL

Thursdays, January 9 and 16
Main Library, 6:30 p.m.



In this 2-part class, learn the basics of American Sign Language with instructor Melissa Kelly. Signs include the alphabet, basic words and personal descriptions. Please register.

T'ai Chi

Fridays, January 10 and 24
Scheben Branch, 2:30 p.m.

Improve balance, strength and flexibility with this gentle form of T'ai Chi that is beneficial for arthritis and fall prevention. Appropriate for all experience levels.

Fairy Lantern

Saturday, January 11
Florence Branch, 2 p.m.

Light up dreary winter nights with a whimsical glow jar. Please register.

Take and Make: Lavender Sachets
Monday, January 13
Florence Branch

Pick up a kit to liven up your home or add soft fragrance to clothes and linens with these soothing and sustainable air fresheners, while supplies last.

Comfort Quilts for the Community
Monday, January 13
Hebron Branch, 9:30 a.m.-2:30 p.m.

Monday, January 27
Main Library, 9:30 a.m.-2:30 p.m.

Sew quilts for community charities.



John Leland Atwood and America's Aerospace Success

Monday, January 13
Walton Branch, 6:30 p.m.

Walton native John Leland Atwood led the construction of over 41,000 planes and iconic military aircraft. From fabric covered planes to hypersonic speeds, hear about his contributions to aviation advancement. Presented by Marty Schadler, Aviation Museum of Kentucky.

Slow Cooking in a Fast-Paced World
Tuesday, January 14

Chapin Memorial Library, 5 p.m.

Cold weather goes hand-in-hand with a hot and hearty meal. Discover the benefits of using a slow or multi-cooker and how to convert traditional recipes for this versatile appliance. Please register.

Dance Fitness

Tuesday, January 14
Main Library, 6:30 p.m.

Get fit with upbeat dancing. Wear comfortable shoes and workout clothing, and bring a water bottle.

Writers Group

Tuesday, January 14
Main Library, 7 p.m.

Open to all genres of writing. Share your work with others for feedback. Email asnow@bcpl.org with questions.

Take and Make: Tea for a Friend
Wednesday, January 15
Scheben Branch

Pick up a kit to create a thoughtful note for a friend or loved one including some tea to warm them up on a cold day, while supplies last.

Guided Meditation

Wednesday, January 15
Florence Branch, 6:30 p.m.

Discover the healing benefits of practicing mindfulness and learn focused breathing techniques to relieve stress.

Trivia Night

Wednesday, January 15
Main Library, 6:30 p.m.

Play trivia just for fun! Bring your own team or we'll put one together for you.

Dungeons & Dragons

Thursday, January 16
Main Library, 6:30 p.m.

Bring your dice and characters or choose from a selection of premade adventurers waiting to explore. All levels welcome. Please register.

Passport Acceptance Fair

Saturday, January 18
Scheben Branch, 9 a.m.-3 p.m.

Certified Passport Acceptance Agents will be available to help get your U.S. passport. Applications will be executed on a first come, first serve basis. This event is for new passports only; no adult renewals. Call the Scheben Branch at 859-342-2665 for more information.

Jigsaw Puzzle Competition

Sunday, January 19
Walton Branch, 2 p.m.

Compete in teams of up to 4 people in a 2-hour time limit to be the puzzle champions. Please register each person on your team.

End-of-Life Planning

Wednesday, January 22
Scheben Branch, 6 p.m.

From funeral planning to memorializing loved ones, Linnemann Funeral Homes and Cremation Center has answers to your questions. Please register.

Senior Games: Euchre Tournament

Thursday, January 23
Main Library, 12:30 p.m.

Play euchre as part of the Northern Kentucky Winter Senior Games. Register with the Boone County Parks at 859-334-2117.

Good Vibe Viburnums
Thursday, January 23
Hebron Branch, 6 p.m.

Discover the best viburnum trees and shrubs for this region with Jack Schaffer, horticulturist and arborist at the Cincinnati Zoo & Botanical Garden. Learn how to care for them and the benefits they provide to native creatures. Presented by the Friends of Boone County Arboretum. Please register.

Senior Games: Bocce Tournament
Friday, January 24
Main Library, 12:30 p.m.

Play bocce as part of the Northern Kentucky Winter Senior Games. Register with the Boone County Parks at 859-334-2117.

United Way Free Tax Prep: Drop-off Service

Mondays, January 27- March 31
Florence Branch, 5-6 p.m.

Get help with your taxes with trained and certified volunteers. Check with uwgc.org/taxes or call 2-1-1 for more information. No appointments necessary.

UV Resin 101

Tuesday, January 28
Hebron Branch, 6 p.m.

Make a keychain in this introduction to crafting with UV resin. Please register.



Planning a Solo International Trip

Tuesday, January 28
Main Library, 6:30 p.m.

No travel buddy? No worries! Learn practical tips and advice for planning a solo international trip.



Call the Community Events Liaison at 859-292-3393 at least one week in advance if special accommodations are needed.

AI: It's Past, Present and Future

Wednesday, January 29
Scheben Branch, 6:30 p.m.

Explore the history of artificial intelligence, ways generative AI is being used in the present and how it is transforming our world. Presented by Dr. Kevin Kirby, Dean of the College of Informatics at NKU.

Suicide Prevention Training

Thursday, January 30
Main Library, 6 p.m.

QPR (Question, Persuade and Refer) are 3 simple steps anyone can learn to help save a life from suicide. Larry McNabb MRC, CRC teaches how to recognize the warning signs of a suicide crisis. Receive a certificate after completing the training. Please register.

Where Will 2025 Take You?

Passport Acceptance Fair

Saturday, January 18
Scheben Branch
9 a.m.-3 p.m.



Questions?

Scheben Branch
859-342-2665



REGISTER FOR LIBRARY EVENTS

Go to bcpl.org and locate your program in the Library's event calendar or call 859-342-BOOK (2665) and select the appropriate location. All registrations will close one hour prior to the event unless otherwise noted.

Animal Encounter!

All About Owls

Tuesday, January 14
Hebron Branch, 6 p.m.



BCPL Locations and Book Drops Closed
Wednesday, January 1
Happy New Year!

ArtSmart (grades K-5)
Thursday, January 2
Scheben Branch, 6 p.m.

Monday, January 13
Hebron Branch, 6 p.m.

Tuesday, January 21
Walton Branch, 6 p.m.

Unleash creativity while learning about an artist. Explore techniques and materials to create your own masterpiece.

Drive-In Movie (family)
Friday, January 3
Main Library, 2-4 p.m.

Start your engines! Buckle up for *Cars* as you build your own cardboard vehicle. Please register.

ABC Play With Me (birth-5 years)
Saturday, January 4
Main Library, 10-11:30 a.m.

Tuesdays, January 14 and 28
Florence Branch, 10-11:30 a.m.

Learn and explore through play by participating in activities that promote healthy development and learning.

Let's Glow Crazy 2025 (grades K-5)
Tuesday, January 7
Hebron Branch, 6 p.m.

Celebrate the new year with glow games, crafts and snacks. Please register.

Homeschool Sampler (grades 1-5)
Wednesday, January 8
Main Library, 2:30 p.m.

Wednesday, January 22
Walton Branch, 2:30 p.m.

Mingle with other homeschool families through crafts, experiences and community presentations. Please register.

Frosty Fun (grades K-5)
Wednesday, January 8
Walton Branch, 6 p.m.

Bundle up and beat the winter blues with an indoor blizzard party featuring icy-themed games and crafts. Please register.



WAVE Foundation (family)
Saturday, January 11
Walton Branch, 2 p.m.

Enjoy an up-close look at an aquatic animal! Dive deep into learning about adaptations that help them survive in the wild. Please register.

All About Owls (family)
Tuesday, January 14
Hebron Branch, 6 p.m.

RAPTOR, Inc. will be swooping in to share facts and show off our local raptors! Owls will be available for pictures!

Mad Scientists (grades 3-5)
Wednesday, January 15
Scheben Branch, 6 p.m.

Explore all things frosty, slushy and cold as we identify snowflake patterns, grow crystals and make ice cream.

Cincinnati Museum Center: A Cultural Experience (3-5 years)

Thursday, January 16
Main Library, 6 p.m.
Use music, toys, colorful clothing and role playing to explore cultures from Peru, Japan and Mali. Please register.

Itty Bitty Playdate (birth-2 years)
Saturday, January 18
Scheben Branch, 10 a.m.

Enjoy playtime with developmentally appropriate play stations and activities.

Kindness Scavenger Hunt (grades K-5)
Monday, January 20
Florence Branch, 9 a.m.-8 p.m.

In honor of MLK Jr. Day, drop in to participate in a scavenger hunt. Race to check off your list, and have fun helping your friends, family and neighbors!

Artistic Exploration (family)
Monday, January 20
Main Library, 2-4 p.m.

In honor of MLK Jr. Day, create paintings and collages that will be displayed in the library during Black History Month.

 Call the YS Community Events Liaison at 859-342-2665 Ext. 8142 at least one week in advance if special accommodations are needed.

Full STEAM Ahead (2-5 years)
Monday, January 20
Hebron Branch, 6 p.m.

Embark on an arctic adventure! Explore the magic of winter with fake snow and ice painting.

Pokemon™ Game Night (grades K-5)
Monday, January 20
Main Library, 6:30 p.m.

Bring your cards or gaming device. Library decks and game mats available. No trading.

The Children's Theatre presents: Straight Up Outta' the Underground (family)

Sunday, January 26
Scheben Branch, 2 p.m.
Follow Harriet "Moses" Tubman, the most recognized conductor of the Underground Railroad. She lived up to her name by gaining her freedom and freeing over 300 slaves! Please register.



Dog Man-ia (grades 3-5)
Thursday, January 30
Scheben Branch, 6 p.m.

Part dog, part man, all hero! Celebrate your favorite crime fighter and his evil cat nemesis with a K-9 sniff test, drawing a flip book and puppet making. Please register.



Stuffed Pajama Party (2-5 years)
Thursday, January 30
Hebron Branch, 6 p.m.

Cozy up in your pajamas and bring your stuffed friend along as we read Kentucky Bluegrass Award nominee books, finger paint a masterpiece and play in shaving cream clouds.

book REVIEW

Amy Ferguson at the Main Library recommends wacky weather books that explore the world around us.

Little Cloud
by Eric Carle

Rain
by Manya Stojic

Snow
by Uri Shulevitz

The Fog
by Kyo Maclear
illustrated by Kenard Pak

One Hot Summer Day
by Nina Crews

Come On, Rain!
by Karen Hesse
illustrated by Jon J. Muth

A Wonderful World of Weather
by Kay Barnham
illustrated by Maddie Frost

Ten Beautiful Things
by Molly Beth Griffin
illustrated by Maribel Lechuga

Bringing the Rain to Kapiti Plain
by Verna Aardema
illustrated by Beatriz Vidal



Weekly
January 6 - April 25

Baby Time
(birth-18 months)
Main Library
• Wed: 9:30 a.m.
Scheben Branch
• Fri: 9:30 a.m.

Tiny Tots
(18 months- 2½ years)
Scheben Branch
• Mon: 10 a.m.
• Wed: 10 a.m.
Hebron Branch
• Tues: 10 a.m.
Main Library
• Thurs: 9:30 a.m.
• Thurs: 11 a.m.

Toddler Tales
(2½-3½ years)
Main Library
• Mon: 9:30 a.m.
• Wed: 11 a.m.
Scheben Branch
• Tues: 11 a.m.
Walton Branch
• Wed: 9:30 a.m.

Stories with Art
(3-6 years)
Scheben Branch
• Tues: 6:30 p.m.

Sleepy Tales
(birth-5+ years)
Florence Branch
• Mon: 5 p.m.
Walton Branch
• Thurs: 6:30 p.m.

Bookworms
(3½-5+ years)
Walton Branch
• Mon: 11 a.m.
Main Library
• Tues: 11 a.m.
Scheben Branch
• Thurs: 10 a.m.

Family Time
(birth-5+ years)
Main Library
• Mon: 11 a.m.
• Fri: 9:30 a.m.
Scheben Branch
• Tues: 9:30 a.m.
Walton Branch
• Tues: 9:30 a.m.
Hebron Branch
• Wed: 10 a.m.
• Thurs: 9:30 a.m.
Chapin Memorial Library
• Thurs: 6 p.m.
Florence Branch
• Fri: 10:30 a.m.

Sensory Storytime
(2-5 years)
Main Library
• Fri: 11 a.m.
• Please register.

REGISTER FOR LIBRARY EVENTS

Go to bcpl.org and locate your program in the Library's event calendar or call 859-342-BOOK (2665) and select the appropriate location. All registrations will close one hour prior to the event unless otherwise noted.

Gaming From Scratch

Make Your Own Game with Godot

January 20, 21 and 22
Scheben Branch
5-6:30 p.m.

BCPL Locations and Book Drops Closed
Wednesday, January 1
Happy New Year!

Dungeons & Dragons (grades 6-12)
Fridays

Scheben Branch, 4-5:30 p.m.
Play D&D 5th Edition! All levels welcome. Characters are ready or bring your own. To be a dungeon or game master, email dpina@bcpl.org.

Global Goodies (grades 6-12)

Wednesday, January 8
Main Library, 6 p.m.

Bring the coziness of Denmark to Kentucky. Make a pillow and snack on Danish licorice.

Nintendo™ Club (grades 6-12)

Thursday, January 9
Scheben Branch, 6 p.m.

We love playing Nintendo™ games! Battle for Ultimate Glory or exchange friend codes with new friends. Snacks provided.

Teen Time (grades 6-12)

Monday, January 13
Walton Branch, 4 p.m.

Be mindful and relax with other teens while you craft items for self-care: shower steamers, stress balls and ice candles.

Anime Afternoon (grades 6-12)

Wednesday, January 15
Florence Branch, 5 p.m.

Watch anime, share what manga you're reading and have some snacks. Please register.

Make Your Own Game with Godot (grades 6-12)

January 20, 21 and 22
Scheben Branch, 5-6:30 p.m.

Make a video game from scratch using Godot 4! Attend any session to share ideas, troubleshoot and connect with young developers. Each day, share your game and play others' creations. Please register.



Maker Monday (grades 6-12)

Monday, January 27
Hebron Branch, 6 p.m.

Upcycle a comic book by making comic book coasters! Please register.

Manga Mania (grades 6-12)

Tuesday, January 28
Main Library, 6 p.m.

Share your love of manga! Read or draw your own while listening to anime music.



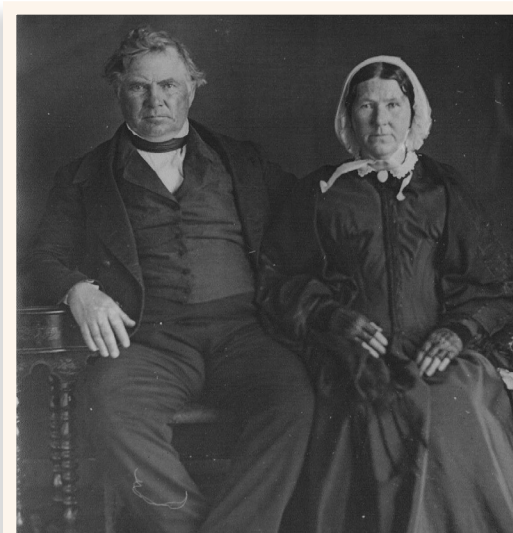
Call the YS Community Events Liaison at 859-342-2665 Ext. 8142 at least one week in advance if special accommodations are needed.

Floating Photography Studios

By Hillary Delaney, Local History Associate

As steamboats picked up and dropped off tradable goods in Boone County's river towns, they often arrived with entrepreneurs aboard, offering unique services and all types of entertaining diversions; one of these was photography. As portrait photos of various types began to gain popularity, photographers took to the river to drum up business, sometimes aboard their own floating studios. Newspapers advertised these "Daguerreotype Artists" who traveled on the river, making their living with this new and trending technology.

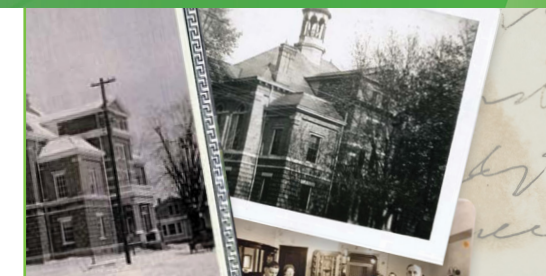
Daguerreotypes, developed in the late 1830s, were popular and widely available by the 1850s but could be cost-prohibitive for average-income families. For context, lower-wage workers could expect to pay up to a full week's wages for one image. In the early 1850s, ambrotypes and tintypes offered alternative options for consumers, but the nickname of the first option stayed with photographers for years. Tintypes, most associated with Civil War era photos, were printed on metal and marketed in folding paper envelopes, unlike their counterparts which were printed on glass and placed in fancy, hinged cases. Tintypes also had a quicker developing time which made them more affordable and ultimately the most popular choice with the general public.



According to the diary of Petersburg resident Lewis Loder, Boone County was a regular stop for 19th century traveling photographers. A photo-boat docked for several days in Petersburg in 1858 as the photographer, working only for tips, documented colorful patrons of Schramm's Tavern. Another entry referred to an "Uncle Sam Artist" traveling on a "Daguering-boat" who stopped in Petersburg twice in two months, but it's unclear if he was the photographer or a costumed character available to pose with subjects.

Additional mentions involved photographers arriving not by boat but in steam-powered "cars on wheels" in the late 1850s. People were fascinated with the contraption and happily paid to have their photo taken with it as a prop. In September 1858, two men came to Petersburg School to give a free public exhibition of their "panorama show of Cincinnati". These unnamed men may have been William S. Porter and Charles Fontayne, who famously captured the entire Cincinnati riverfront in a series of panorama shots taken in 1848.

As photography evolved and became more available, an increasing number of people were having their images captured for the ages. The mentions in Loder's diary began to change from the artist visiting the subject to the subject visiting the artist at his studio. Many examples of these early images can be found in family photo albums and have held up to time, giving a glimpse of days long past.



Archive and History Center Information

about

With 7000+ physical items, 4000+ digital items and 5 experts, the Archive and History Center at Boone County Public Library is the foremost authority in Boone County local history and genealogy.

desk hours

Monday-Friday 9 a.m.-5 p.m.
Saturday 1 p.m.-5 p.m.

contact us

859-342-2665 Ext. 8134
historycenterhelp@bcpl.org

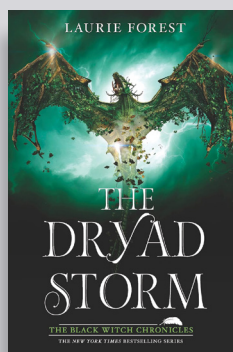
Boone County Public Library
1786 Burlington Pike
Burlington, KY 41005

A Snapshot in History

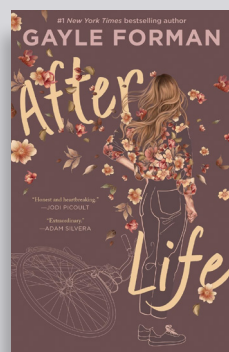


Florence Town Hall
-BCPL Digital Archive

TEEN new releases



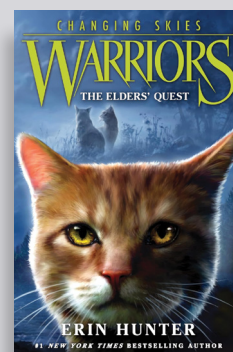
The Dryad Storm
The Black Witch Chronicles
by Laurie Forest



After Life
by Gayle Forman



The Rival
by Emma Lord



The Elder's Quest
Warriors: Changing Skies
by Erin Hunter

```
@classmethod
def from_settings(cls)
    debug = settings
    return cls(job_d

def request_seen(self)
    fp = self.request
    if fp in self.f
        return True
    self.fingerprin
    if self.file:
        self.file.

def request_finger
    return request
```

Concerts

BCPL brings you a calendar of live music from a variety of musical artists!

Bands are subject to change without notice.

 Call the Community Events Liaison at 859-292-3393 at least one week in advance if special accommodations are needed.

january

String Theory
Friday, January 10
Main Library, 7 p.m.
Rock, country, and folk favorites from the 60s and beyond

february

Lagniappe
Friday, February 7
Main Library, 7 p.m.
Traditional Cajun music

march

The Hills of Kentucky Dulcimers
Sunday, March 16
Walton Branch, 2:30 p.m.
Traditional appalachian dulcimers

Matt Tolentino Band
Friday, March 21
Main Library, 7 p.m.
Jazz, swing, and pop from the 20s and 30s



String Theory - January 10



Lagniappe - February 7

Boone Innovation Lab Spotlight Make It Custom with the Sawgrass Sublimation Printer!

Discover your next crafting essential at the Boone Innovation Lab at the Main Library in Burlington - the versatile sublimation printer!

The Sawgrass SG-500 printer is for sublimation printing of detailed and colorful images to transfer onto items such as shirts, hats, tumblers, mugs, coasters, mousepads and more!

It's easy to get started. Once you find an image you want to transfer onto an item, you'll upload it onto our computer to print. Once printed on the sublimation paper, you'll transfer the image to the item using our heat press. And just like that, you've created a custom item!

The BIL carries paper in size 8.5x11 with each print costing only \$1. Please bring in your item to transfer on and make sure your item has a sublimation coating, either included with the item or applied on your own. .

The possibilities are endless with the Sawgrass sublimation printer! Don't wait to start making custom creations at the Boone Innovation Lab!

A BCPL library card in good standing is needed to use the BIL. If you don't have one, stop by to sign up!



Book your appointment at
bcpl.org/bil



BIL Information

about

Located at the Main Library, Hebron Branch and Walton Branch, the BIL is a place to create, learn and preserve memories. For more information, visit bcpl.org/bil.

hours

Hours vary according to staff availability. Appointments are required.

equipment

Equipment varies across locations. Visit bcpl.org/bil to reserve the following for use in the BIL.

Audio/Visual

- green screen
- microphones with POP filter
- photo cube light set-up
- media conversion station

Crafting/Sewing

- sewing machine
- quilting machine
- embroidery machine
- serger
- button maker

Creator Group

- 3D printers
- smart cutter
- laser cutter
- poster printer
- sublimation printer
- heat press

Computers

- digital drawing tablet

Digital Resource

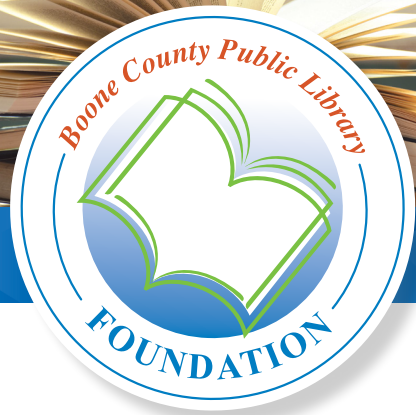


Ring in the New Year with films from iNDIEFLIX!

This year, bring something fresh to your movie nights! iNDIEFLIX offers a unique streaming experience with thousands of hidden gems, indie classics, and acclaimed series—all available with your library card.

Log in to Libby, grab a 7-day pass, and dive into a world of captivating stories from filmmakers around the globe. When your pass expires, no problem—return to Libby for another! Start the year by expanding your watchlist with unforgettable films you won't find anywhere else.





Contributions will enhance and support our mission statement beyond the means of public funding.

Ways to make a donation:

- PayPal
- Check
- Horizon Community Fund
- Kroger Community Rewards

For more information or to make a donation, visit bcpl.org/foundation. All donations are tax-deductible; an acknowledgment letter will be sent to the donor.

On Display

- Diamond Art**
January 1-31
Scheben Branch
Explore the world of diamond art.
- Collection of Owls**
January 1-31
Walton Branch
View a variety of owl collectibles.
- Miniature Paper Crafts**
January 1-31
Walton Branch
Marvel at model masterpieces made from cardstock.

Curt Bessette Art Gallery

The Curt Bessette Art Gallery is located on the first floor of the Main Library. It features work by regional and national artists, as well as special exhibits. The gallery gives local artists a chance to display their work for sale.

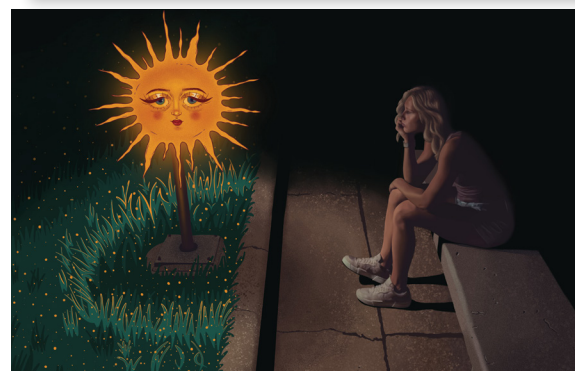
The namesake of the gallery, Curt Bessette, was a quiet child who spent many hours drawing and creating art of the people and scenes around him. As time passed, his interest in art and talent for various artistic styles only grew until he became known by his peers as the Artist. Mr. Bessette also served on the Boone County Public Library Board of Trustees from July 2016 to February 2017.

On Exhibit

Brianna Saunders January 24-February 26 Main Library, Curt Bessette Art Gallery

Brianna Saunders' artwork ranges from black and white portraits to colorful surrealism. Her primary medium is graphite, but she has recently started creating digital artwork. Though vastly different in their appearance, her artwork is always trying to convey a feeling.

Brianna started drawing and painting as a hobby early in her childhood. As she grew older, her art became an outlet for her anxiety and depression. After her art was put on hold during early adulthood. Her love of drawing was reignited after she attended an art class in 2017. Brianna has spent the last seven years cultivating her craft, trying new mediums and styles, and truly falling back in love with her art.



Book Discussion Groups

To request a book, call 859-342-BOOK (2665) or email the group leader.

Best of the Best

Thursday, January 2
Florence Branch, 3 p.m.
My Dark Vanessa
by Kate Elizabeth Russell
Read and discuss bestselling novels.
Leader Michael: mstulz@bcpl.org

Thrillers and Chillers

Thursday, January 9
Main Library, 10 a.m.
The Last Party by Clare Mackintosh
Read suspense, mystery and true crime.
Leader Alisa: asnow@bcpl.org

Classics Unfolded

Monday, January 13
Walton Branch, 6 p.m.
Adventures of Huckleberry Finn
by Mark Twain
Encounter timeless tales in new ways.
Titles change quarterly.
Leader Jessica: jmarkink@bcpl.org

Chapter and Verse

Tuesday, January 14
Scheben Branch, 6:30 p.m.
Take My Hand by Dolen Perkins-Valdez
Read everything fiction to biographies.
Leader Shaun: spowell@bcpl.org

Chick Picks

Thursday, January 16
Main Library, 10 a.m.
This Tender Land by William Kent Krueger
Women of all ages read a mix of genres.
Leader Karen: khelmle@bcpl.org

Silent Book Club

Monday, January 20
Hebron Branch, 6 p.m.
Bring your own book and read with no pressure for discussion.
Leader Gelene: gmorales@bcpl.org

Books to Savor

Sunday, January 26
Walton Branch, 2 p.m.
Where'd You Go, Bernadette
by Maria Semple
Read novels with culinary connections and share recipes.
Leader Gabi: grichardson@bcpl.org

Monday 4 Mystery

Monday, January 27
Florence Branch, 6:30 p.m.
I Have Some Questions for You
by Rebecca Makkai
Explore mystery and suspense novels.
Leader Kevin: kwadlow@bcpl.org



Mobile Apps

BCPL App

Download the BCPL app from Apple's App Store or Google Play to search for items, manage your account, browse Library events and more.



Libby

Download the Libby app to access our expansive Kentucky Libraries Unbound digital collection and more.



Genre Author List

Gothic Fiction tells stories that haunt, intrigue and unsettle readers. Typically eerie in nature, this genre can be a mixture of horror, mystery and thriller.

- | | | |
|-----------------------------|-------------------------|---------------------------|
| Silvia Moreno-Garcia | Alexis Henderson | Stacy Willingham |
| T. Kingfisher | Isabel Cañas | Barbara Davis |
| Kate Morton | Jennifer McMahon | Donal Ryan |
| Danielle Trussoni | Catriona Ward | Jonathan E. Durham |
| Rivers Solomon | Karen Harper | Diane Setterfield |

Gothic Fiction

For more recommendations, visit bcpl.org/books.

Buy the Book

Buy the Book sells used books, movies, music and more at bargain prices! It is located on the first floor at the Main Library in Burlington and is open during library hours.



1786 Burlington Pike
Burlington, Kentucky 41005

Nonprofit
U.S. Postage
PAID
Florence, KY
Permit No. 50

SIX locations to serve you – one phone number: 859-342-BOOK (2665) www.bcpl.org #CheckOutBCPL

MAIN LIBRARY

1786 Burlington Pike, Burlington, KY 41005
Monday-Thursday 9am-9pm
Friday 9am-6pm
Saturday 9am-5pm
Sunday 1-5pm

WALTON BRANCH

13000 Towne Center Dr, Walton, KY 41094
Monday-Thursday 9am-8pm
Friday 9am-6pm
Saturday 9am-5pm
Sunday 1-5pm

FLORENCE BRANCH

7425 US 42, Florence, KY 41042
Monday-Thursday 9am-8pm
Friday 9am-6pm
Saturday 9am-5pm

SCHEBEN BRANCH

8899 US 42, Union, KY 41091
Monday-Thursday 9am-8pm
Friday 9am-6pm
Saturday 9am-5pm
Sunday 1-5pm

HEBRON BRANCH

1863 North Bend Rd, Hebron, KY 41048
Monday-Thursday 9am-8pm
Friday 9am-6pm
Saturday 9am-5pm
Sunday 1-5pm

CHAPIN MEMORIAL LIBRARY

6517 Market Street, Petersburg, KY 41080
Monday-Thursday 11am-7pm
Friday 10am-6pm
Saturday 10am-5pm
STAFF AVAILABLE:
Tuesday & Wednesday 2-7pm
Thursday 1-7pm

Meet the Board of Trustees

Dr. Emily Myers, Vice President

Dr. Emily Myers joined the BCPL Board of Trustees in 2022 and currently serves as Vice President. Her love for the library and its services to the community inspired her to join the Board, as well as her desire to stay connected to an educational mission. When her children were young, the library was a favorite place for the family to visit. Now, they enjoy exploring the library’s digital resources while on their way to afterschool activities and weekend sports. For Dr. Myers and her family, the library always offers something new to explore!

Dr. Myers serves as the Organizational Health and Development Officer for the 711th Human Performance Wing at the Air Force Research Laboratory in Dayton, OH, where she acts as an internal consultant. She is also an adjunct faculty member at the University of Cincinnati, teaching Measurement and Assessment as part of the Medical Education master’s program. Previously, she worked with the University’s College of Nursing, leading a team of instructional designers and technologists to collaborate with faculty on developing innovative online learning solutions.

Dr. Myers holds an EdD in Leadership and Learning in Organizations from Vanderbilt University, a MS Ed in Instructional Design and Technology from Old Dominion University, and a BS in Special Education from Indiana University, Bloomington.

Dr. Myers has called Northern Kentucky home for over a decade, having relocated from Virginia Beach, VA, where she worked as a K-12 special education teacher while her husband served in the Navy. She now lives in Burlington with her husband and two sons. As a family, they enjoy both participating in and watching sports, including baseball, soccer and football.

